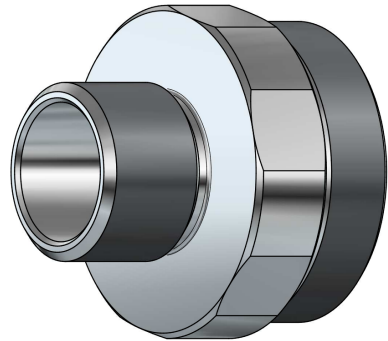
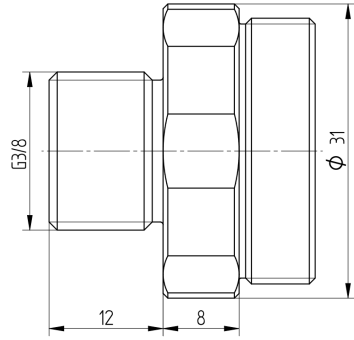


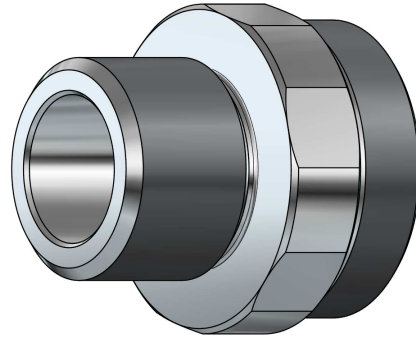
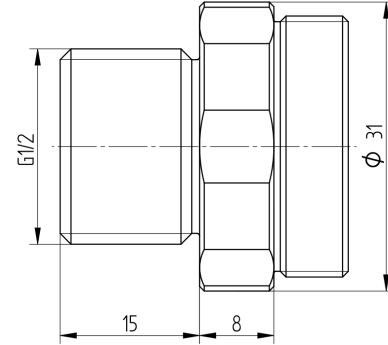
**smartec**

Series 12

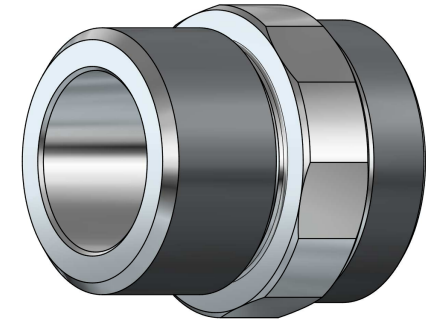
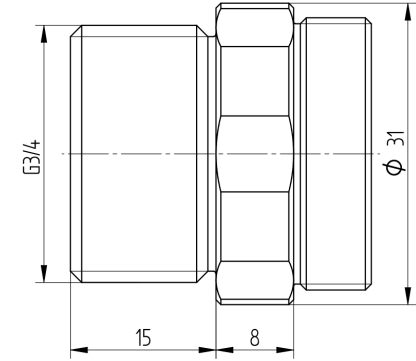
## AM12-G375



## AM12-G500



## AM12-G750



### S12 Machine Adaptor G3/8

SmarTec Line: S12

External Diameter: 31 [mm] (1.22")

Effective Length: 8 [mm] (0.3")

Internal Diameter: 13.5 [mm] (0.53")

Tooling: SW 30

Thread: G3/8

Material: Austenitic Stainless Steel

Temperature Range: -30°C to 120°C (-20°F to 250°F)

### S12 Machine Adaptor G1/2

SmarTec Line: S12

External Diameter: 31 [mm] (1.22")

Effective Length: 8 [mm] (0.3")

Internal Diameter: 13.5 [mm] (0.53")

Tooling: SW 30

Thread: G1/2

Material: Austenitic Stainless Steel

Temperature Range: -30°C to 120°C (-20°F to 250°F)

### S12 Machine Adaptor G3/4

SmarTec Line: S12

External Diameter: 31 [mm] (1.22")

Effective Length: 8 [mm] (0.3")

Internal Diameter: 13.5 [mm] (0.53")

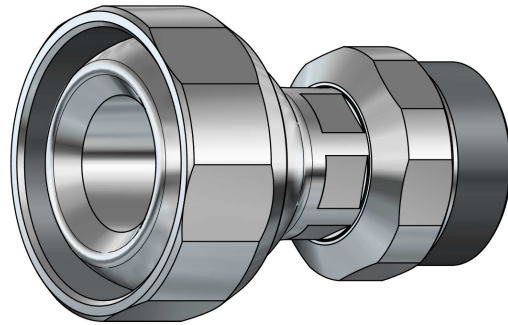
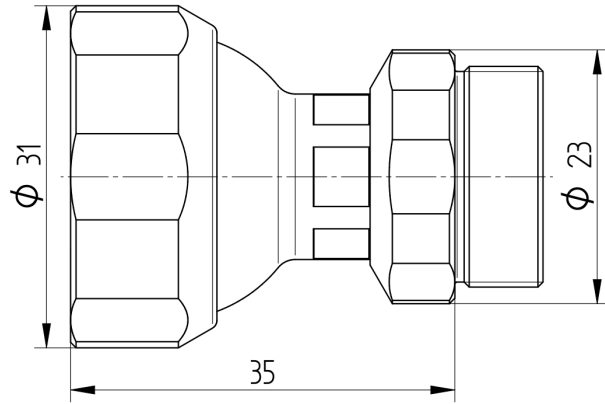
Tooling: SW 30

Thread: G3/4

Material: Austenitic Stainless Steel

Temperature Range: -30°C to 120°C (-20°F to 250°F)

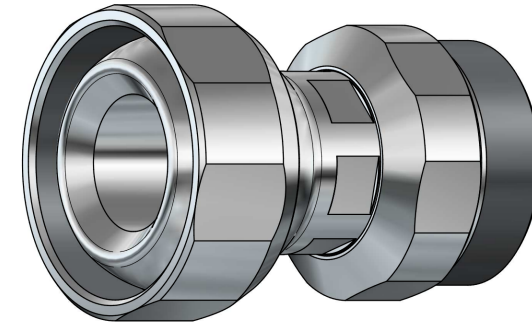
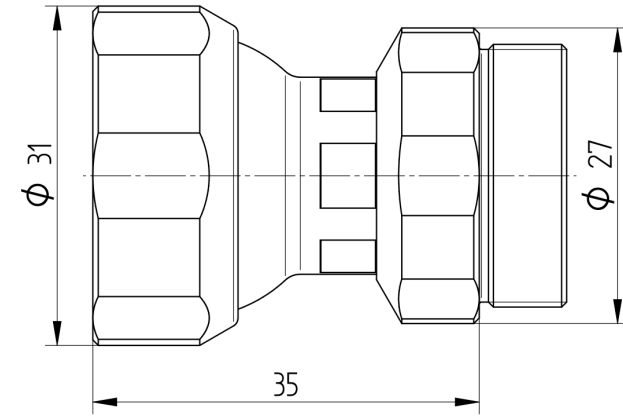
## AS12-TS06



### S12 to S06 Series Adaptor

SmarTec Line: S12  
Base Line: S12  
Secondary Line: S06  
External Diameter: 31 [mm] (1.22")  
Effective Length: 35 [mm] (1.38")  
Internal Diameter: 6.5 [mm] (0.256")  
Tooling: SW 30, SW22  
Material: Austenitic Stainless Steel / NBR (Buna-N)  
Temperature Range: -30°C to 120°C (-20°F to 250°F)

## AS12-TS09

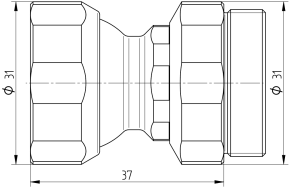


### S12 to S09 Series Adaptor

SmarTec Line: S12  
Base Line: S12  
Secondary Line: S09  
External Diameter: 31 [mm] (1.22")  
Effective Length: 35 [mm] (1.38")  
Internal Diameter: 6.5 [mm] (0.256")  
Tooling: SW 30, SW26  
Material: Austenitic Stainless Steel / NBR (Buna-N)  
Temperature Range: -30°C to 120°C (-20°F to 250°F)

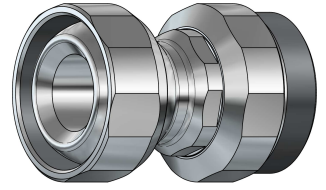
# CH12A

## S12 Chain Unit Straight Short

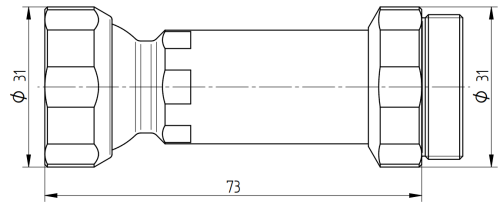


SmarTec Line: S12  
External Diameter: 31 [mm] (1.22")  
Effective Length: 37 [mm] (1.456")  
Internal Diameter: 13.5 [mm] (0.53")  
Tooling: SW 30  
Material: Austenitic Stainless Steel / NBR (Buna-N)  
Temperature Range: -30°C to 120°C (-20°F to 250°F)

## CH12-AS

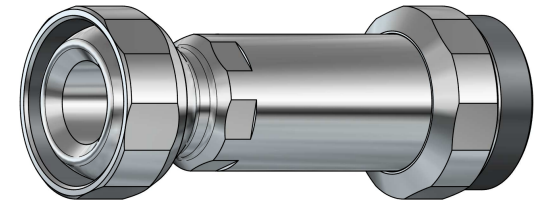


## S12 Chain Unit Straight Mean

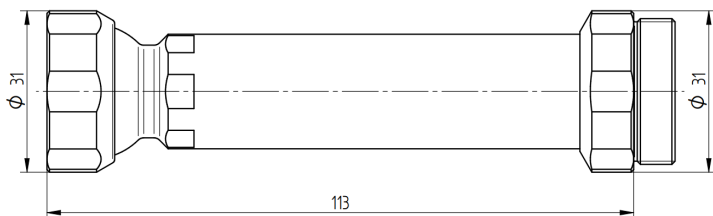


SmarTec Line: S12  
External Diameter: 31 [mm] (1.22")  
Effective Length: 73 [mm] (2.874")  
Internal Diameter: 13.5 [mm] (0.53")  
Tooling: SW 30  
Material: Austenitic Stainless Steel / NBR (Buna-N)  
Temperature Range: -30°C to 120°C (-20°F to 250°F)

## CH12-AM



## S12 Chain Unit Straight Long



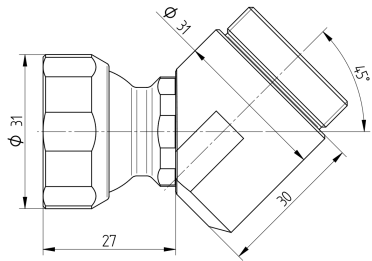
SmarTec Line: S12  
External Diameter: 31 [mm] (1.22")  
Effective Length: 113 [mm] (4.45")  
Internal Diameter: 13.5 [mm] (0.53")  
Tooling: SW 30  
Material: Austenitic Stainless Steel / NBR (Buna-N)  
Temperature Range: -30°C to 120°C (-20°F to 250°F)

## CH12-AL



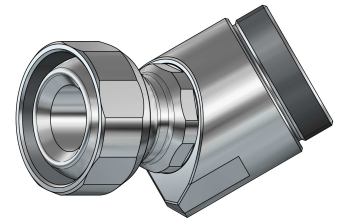
# CH12F

## S12 Chain Unit 45° Short

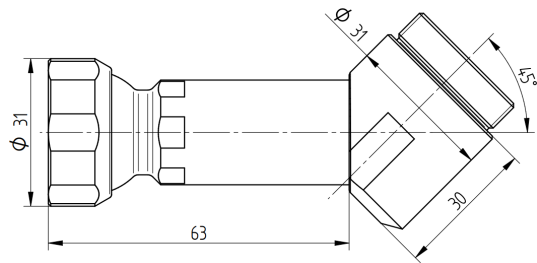


SmarTec Line: S12  
Angle: 45°  
External Diameter: 31 [mm] (1.22")  
Effective Length: 27, 30 [mm] (1.06", 1.18")  
Internal Diameter: 13.5 [mm] (0.53")  
Tooling: SW 30  
Material: Austenitic Stainless Steel / NBR (Buna-N)  
Temperature Range: -30°C to 120°C (-20°F to 250°F)

## CH12-FS

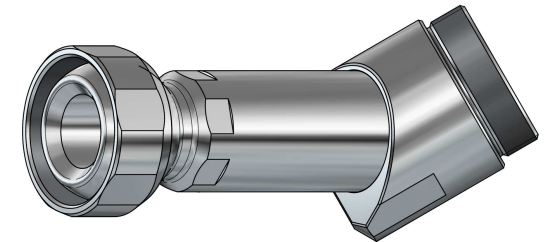


## S12 Chain Unit 45° Mean

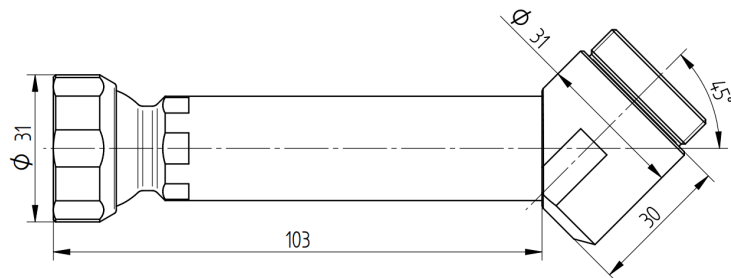


SmarTec Line: S12  
Angle: 45°  
External Diameter: 31 [mm] (1.22")  
Effective Length: 63, 30 [mm] (2.48", 1.18")  
Internal Diameter: 13.5 [mm] (0.53")  
Tooling: SW 30  
Material: Austenitic Stainless Steel / NBR (Buna-N)  
Temperature Range: -30°C to 120°C (-20°F to 250°F)

## CH12-FM



## S12 Chain Unit 45° Long



SmarTec Line: S12  
Angle: 45°  
External Diameter: 31 [mm] (1.22")  
Effective Length: 103, 30 [mm] (4.05", 1.18")  
Internal Diameter: 13.5 [mm] (0.53")  
Tooling: SW 30  
Material: Austenitic Stainless Steel / NBR (Buna-N)  
Temperature Range: -30°C to 120°C (-20°F to 250°F)

## CH12-FL



# CH12P

SmarTec Line: S12

## S12 Chain Unit 90° Short

Angle: 90°

External Diameter: 31 [mm] (1.22")

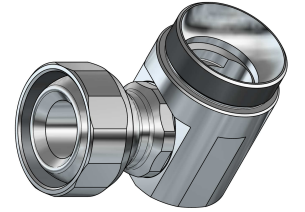
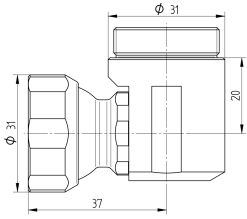
Effective Length: 37, 20 [mm] (1.456", 0.79")

Internal Diameter: 13.5 [mm] (0.53")

Tooling: SW 30

Material: Austenitic Stainless Steel / NBR (Buna-N)

Temperature Range: -30°C to 120°C (-20°F to 250°F)



SmarTec Line: S12

## S12 Chain Unit 90° Mean

Angle: 90°

External Diameter: 31 [mm] (1.22")

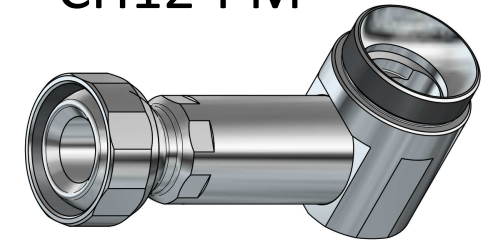
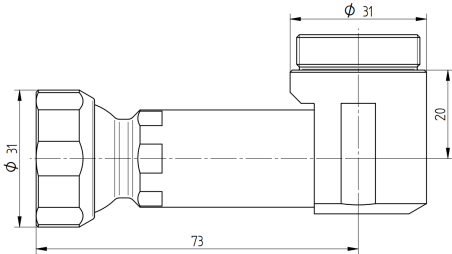
Effective Length: 73, 20 [mm] (2.874", 0.79")

Internal Diameter: 13.5 [mm] (0.53")

Tooling: SW 30

Material: Austenitic Stainless Steel / NBR (Buna-N)

Temperature Range: -30°C to 120°C (-20°F to 250°F)



SmarTec Line: S12

## S12 Chain Unit 90° Long

Angle: 90°

External Diameter: 31 [mm] (1.22")

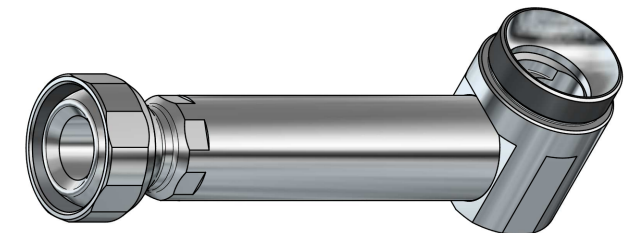
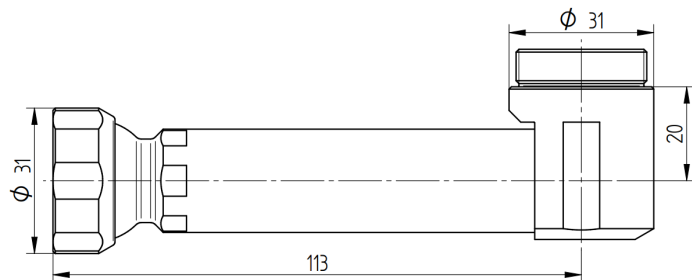
Effective Length: 113, 20 [mm] (4.45", 0.79")

Internal Diameter: 13.5 [mm] (0.53")

Tooling: SW 30

Material: Austenitic Stainless Steel / NBR (Buna-N)

Temperature Range: -30°C to 120°C (-20°F to 250°F)

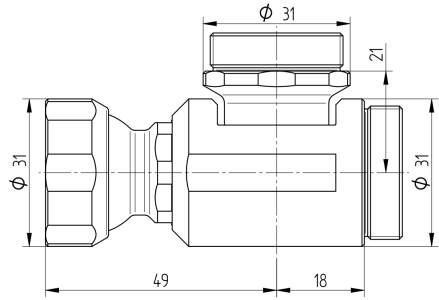


CH12-PS

CH12-PM

CH12-PL

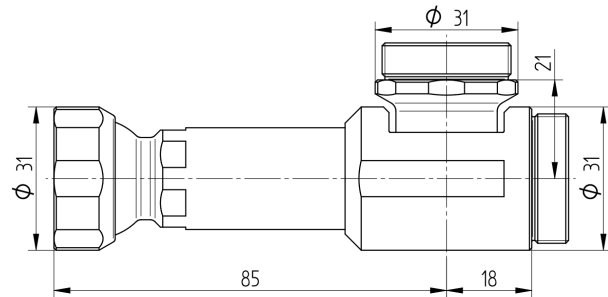
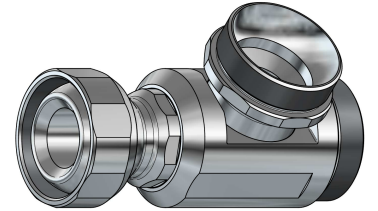
# CH12T



## S12 Chain Unit T Short

SmarTec Line: S12  
Angle:  $90^\circ + 90^\circ$   
External Diameter: 31 [mm] (1.22")  
Effective Length: 49, 18, 21 [mm] (1.93", 0.71", 0.827")  
Internal Diameter: 13.5 [mm] (0.53")  
Tooling: SW 30  
Material: Austenitic Stainless Steel / NBR (Buna-N)  
Temperature Range:  $-30^\circ\text{C}$  to  $120^\circ\text{C}$  ( $-20^\circ\text{F}$  to  $250^\circ\text{F}$ )

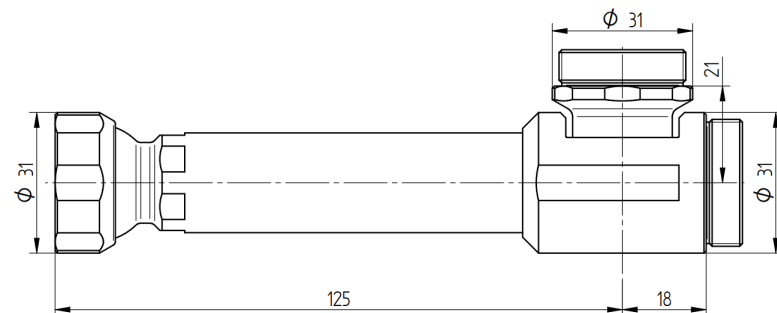
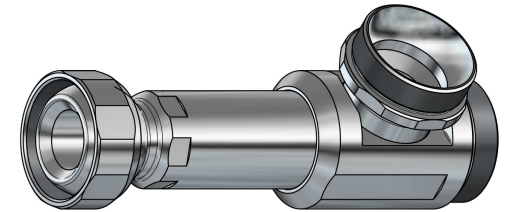
## CH12-TS



## S12 Chain Unit T Mean

SmarTec Line: S12  
Angle:  $90^\circ + 90^\circ$   
External Diameter: 31 [mm] (1.22")  
Effective Length: 85, 18, 21 [mm] (3.35", 0.71", 0.827")  
Internal Diameter: 13.5 [mm] (0.53")  
Tooling: SW 30  
Material: Austenitic Stainless Steel / NBR (Buna-N)  
Temperature Range:  $-30^\circ\text{C}$  to  $120^\circ\text{C}$  ( $-20^\circ\text{F}$  to  $250^\circ\text{F}$ )

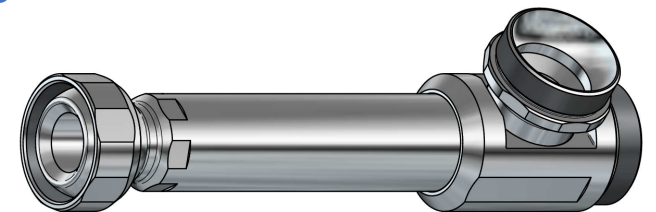
## CH12-TM



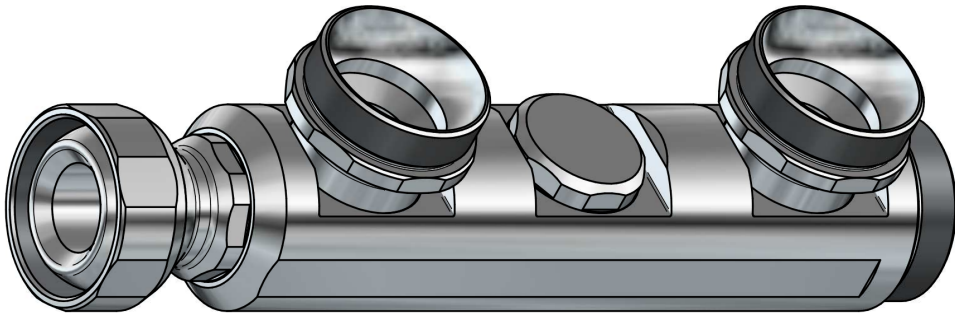
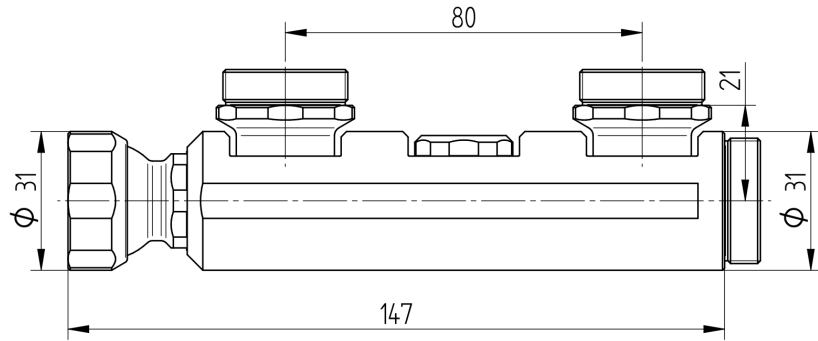
## S12 Chain Unit T Long

SmarTec Line: S12  
Angle:  $90^\circ + 90^\circ$   
External Diameter: 31 [mm] (1.22")  
Effective Length: 125, 18, 21 [mm] (4.92", 0.71", 0.827")  
Internal Diameter: 13.5 [mm] (0.53")  
Tooling: SW 30  
Material: Austenitic Stainless Steel / NBR (Buna-N)  
Temperature Range:  $-30^\circ\text{C}$  to  $120^\circ\text{C}$  ( $-20^\circ\text{F}$  to  $250^\circ\text{F}$ )

## CH12-TL



## CH12-TD



### S12 Chain Unit T Dual Exit

SmarTec Line: S12

Angle: 90° + 90°

No. of Exits: 2

External Diameter: 31 [mm] (1.22")

Effective Length: 147, 80 [mm] (5.8", 3")

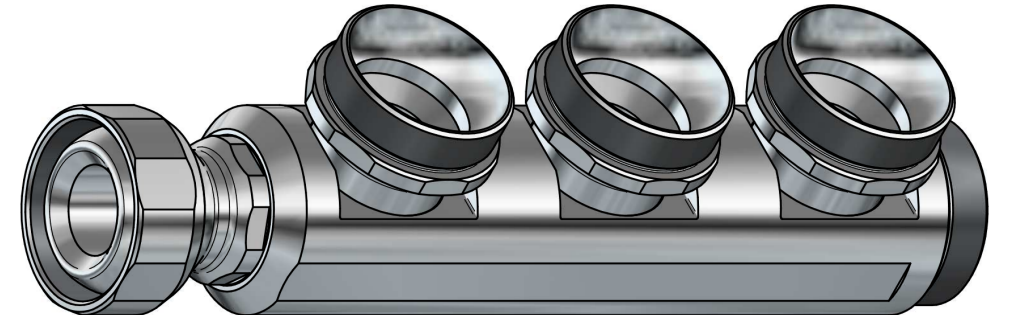
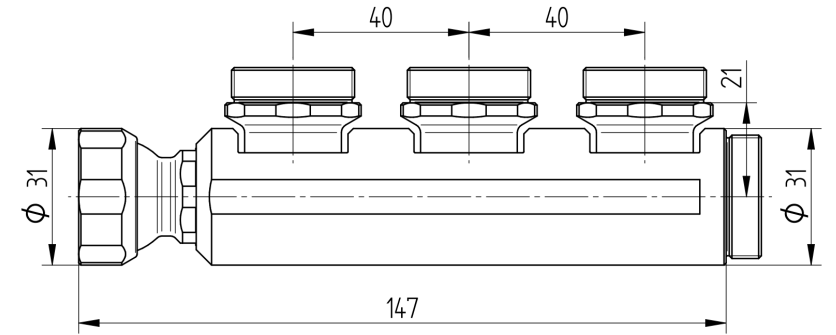
Internal Diameter: 13.5 [mm] (0.53")

Tooling: SW 30

Material: Austenitic Stainless Steel / NBR (Buna-N)

Temperature Range: -30°C to 120°C (-20°F to 250°F)

## CH12-TT



### S12 Chain Unit T Triple Exit

SmarTec Line: S12

Angle: 90° + 90°

No. of Exits: 3

External Diameter: 31 [mm] (1.22")

Effective Length: 147, 40 [mm] (5.8", 1.5")

Internal Diameter: 13.5 [mm] (0.53")

Tooling: SW 30

Material: Austenitic Stainless Steel / NBR (Buna-N)

Temperature Range: -30°C to 120°C (-20°F to 250°F)

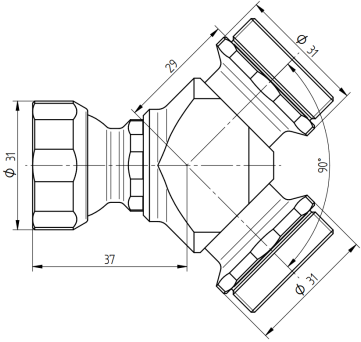
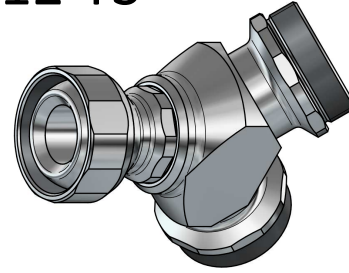


# CH12Y

## S12 Chain Unit Y Short

SmarTec Line: S12  
Angle: 45° + 45°  
External Diameter: 31 [mm] (1.22")  
Effective Length: 37, 29, 29 [mm] (1.456", 1.14", 1.14")  
Internal Diameter: 12.5 [mm] (0.5")  
Tooling: SW 30  
Material: Austenitic Stainless Steel / NBR (Buna-N)  
Temperature Range: -30°C to 120°C (-20°F to 250°F)

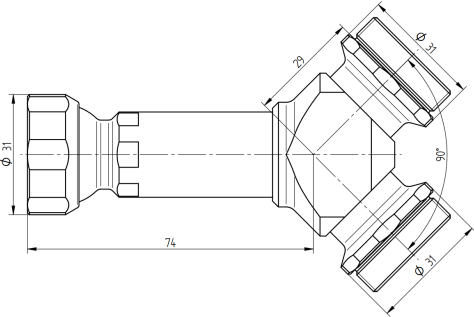
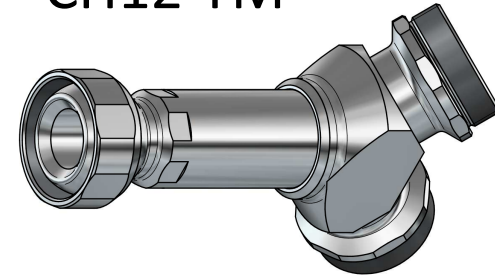
## CH12-YS



## S12 Chain Unit Y Mean

SmarTec Line: S12  
Angle: 45° + 45°  
External Diameter: 31 [mm] (1.22")  
Effective Length: 74, 29, 29 [mm] (2.9", 1.14", 1.14")  
Internal Diameter: 12.5 [mm] (0.5")  
Tooling: SW 30  
Material: Austenitic Stainless Steel / NBR (Buna-N)  
Temperature Range: -30°C to 120°C (-20°F to 250°F)

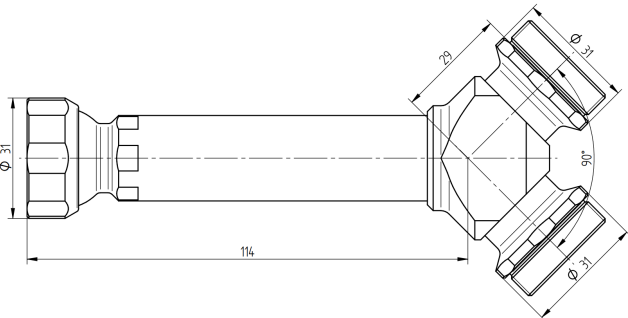
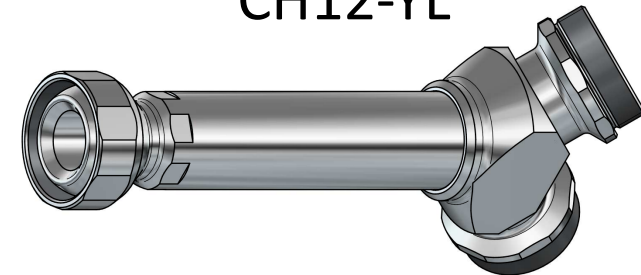
## CH12-YM



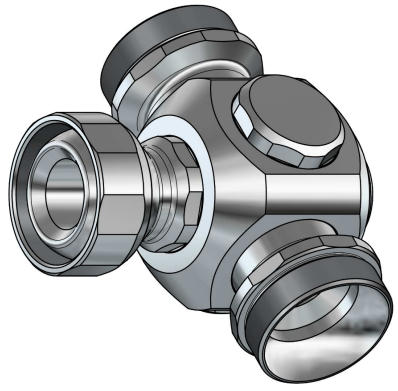
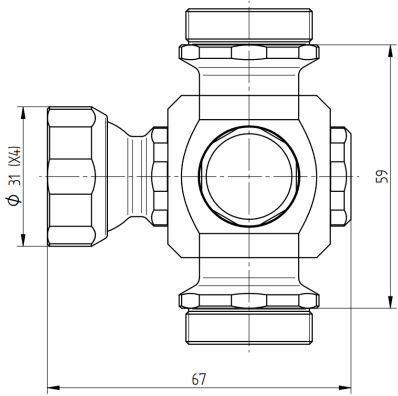
## S12 Chain Unit Y Long

SmarTec Line: S12  
Angle: 45° + 45°  
External Diameter: 31 [mm] (1.22")  
Effective Length: 114, 29, 29 [mm] (4.49", 1.14", 1.14")  
Internal Diameter: 12.5 [mm] (0.5")  
Tooling: SW 30  
Material: Austenitic Stainless Steel / NBR (Buna-N)  
Temperature Range: -30°C to 120°C (-20°F to 250°F)

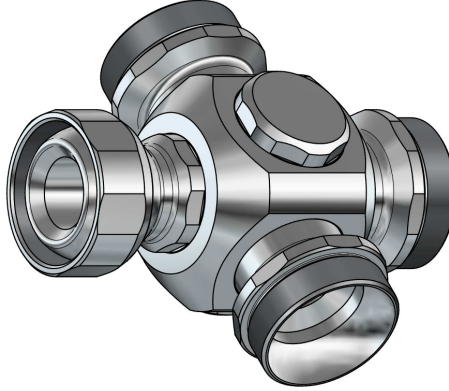
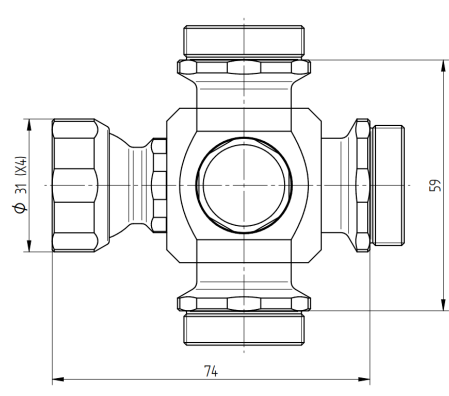
## CH12-YL



# CH12-X2

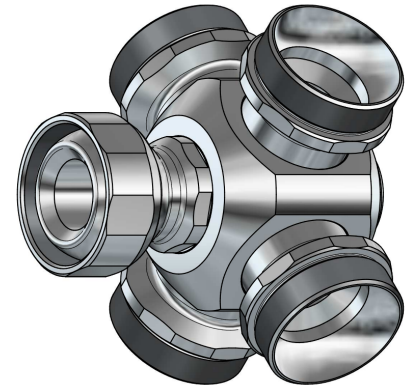
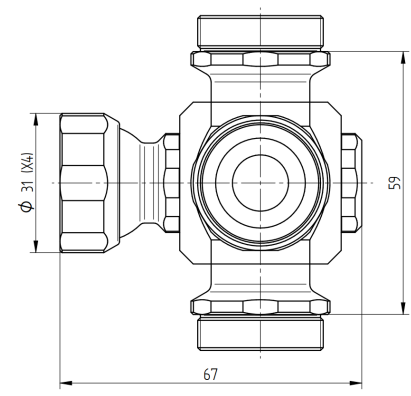


# CH12-X3

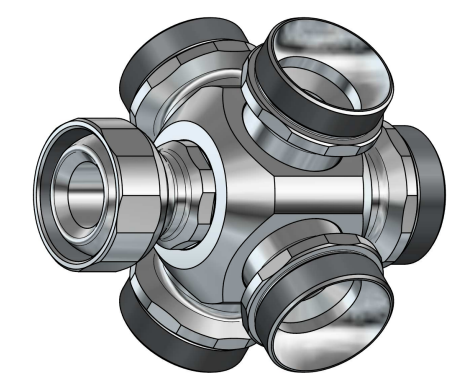
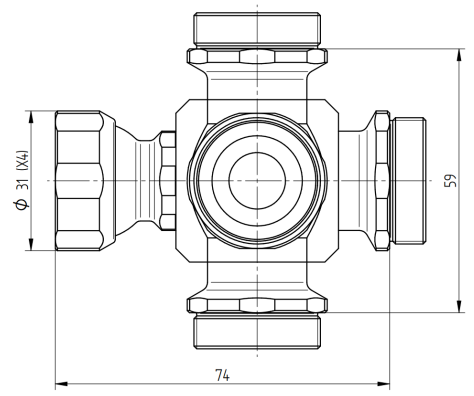


# CH12X

# CH12-X4



# CH12-X5



## S12 Chain Unit X2 Exits

SmarTec Line: S12  
 Angle: 90°  
 No. of Exits: 2  
 External Diameter: 31 [mm] (1.22")  
 Effective Length: 67, 59 [mm] (2.64", 2.32")  
 Internal Diameter: 9.5 [mm] (0.374")  
 Tooling: SW 30  
 Material: Austenitic Stainless Steel / NBR (Buna-N)  
 Temperature Range: -30°C to 120°C (-20°F to 250°F)

## S12 Chain Unit X3 Exits

SmarTec Line: S12  
 Angle: 90°  
 No. of Exits: 3  
 External Diameter: 31 [mm] (1.22")  
 Effective Length: 74, 59 [mm] (2.9", 2.32")  
 Internal Diameter: 9.5 [mm] (0.374")  
 Tooling: SW 30  
 Material: Austenitic Stainless Steel / NBR (Buna-N)  
 Temperature Range: -30°C to 120°C (-20°F to 250°F)

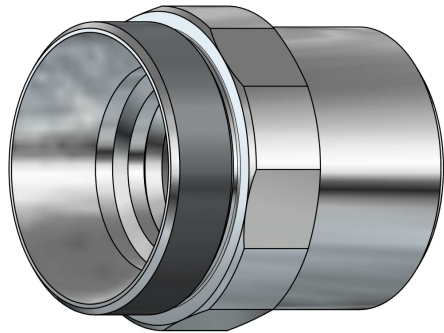
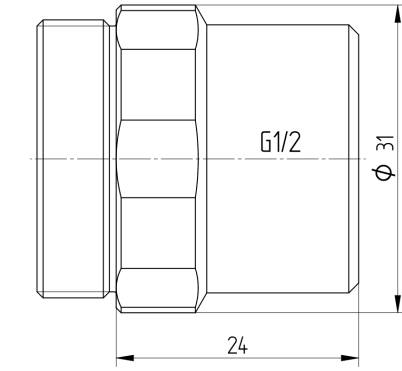
## S12 Chain Unit X4 Exits

SmarTec Line: S12  
 Angle: 90°  
 No. of Exits: 4  
 External Diameter: 31 [mm] (1.22")  
 Effective Length: 67, 59 [mm] (2.64", 2.32")  
 Internal Diameter: 9.5 [mm] (0.374")  
 Tooling: SW 30  
 Material: Austenitic Stainless Steel / NBR (Buna-N)  
 Temperature Range: -30°C to 120°C (-20°F to 250°F)

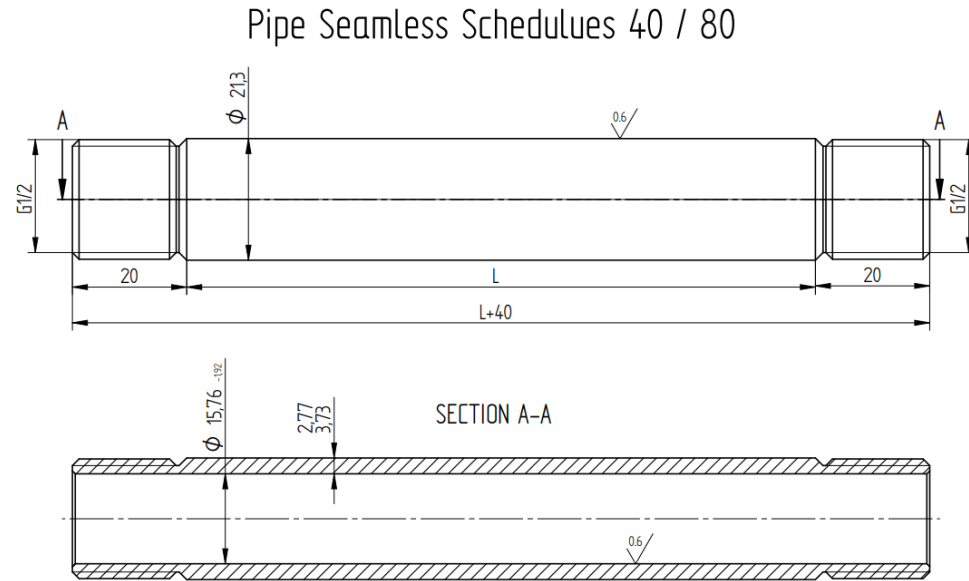
## S12 Chain Unit X5 Exits

SmarTec Line: S12  
 Angle: 90°  
 No. of Exits: 5  
 External Diameter: 31 [mm] (1.22")  
 Effective Length: 74, 59 [mm] (2.9", 2.32")  
 Internal Diameter: 9.5 [mm] (0.374")  
 Tooling: SW 30  
 Material: Austenitic Stainless Steel / NBR (Buna-N)  
 Temperature Range: -30°C to 120°C (-20°F to 250°F)

# CH12-EF

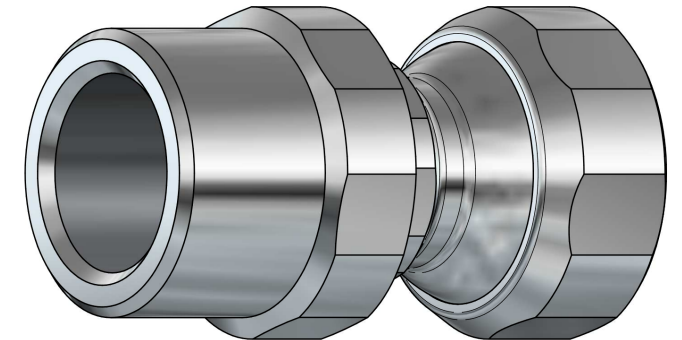
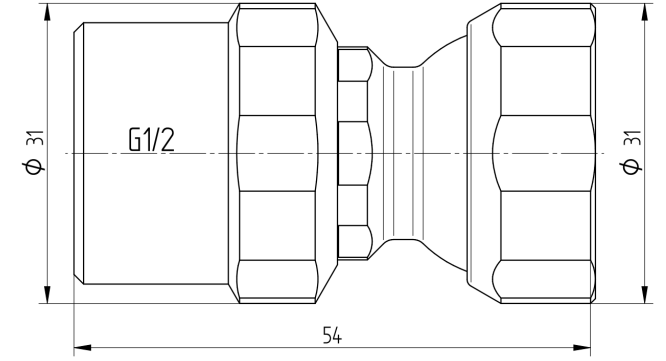


# CH12E



Pipe Size - 1/2  
Pipe for CH12E

# CH12-ER



## S12 Chain Unit Extension Front Adaptor

SmarTec Line: S12  
 External Diameter: 31 [mm] (1.22")  
 Effective Length: 24 [mm] (0.945")  
 Internal Diameter: 13.5 [mm] (0.53")  
 Thread: G1/2  
 Tooling: SW 30  
 Material: Austenitic Stainless Steel  
 Temperature Range: -30°C to 120°C (-20°F to 250°F)

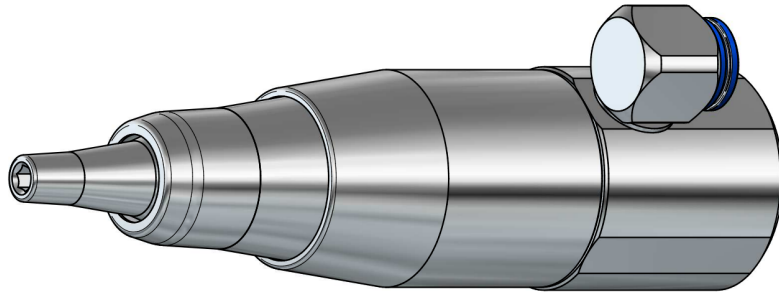
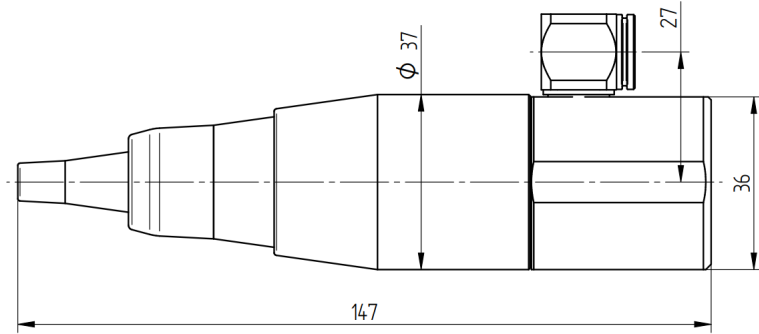
## S12 Chain Unit Pipe Extension



## S12 Chain Unit Extension Rear Adaptor

SmarTec Line: S12  
 External Diameter: 31 [mm] (1.221")  
 Effective Length: 54 [mm] (2.125")  
 Internal Diameter: 13.5 [mm] (0.53")  
 Thread: G1/2  
 Tooling: SW 30  
 Material: Austenitic Stainless Steel / NBR (Buna-N)  
 Temperature Range: -30°C to 120°C (-20°F to 250°F)

# JD12



## S12 Smart Jet

SmarTec Line: S12

Chain Adaptor: AJ12

External Diameter: 38 [mm] (1.5")

Effective Length: 147 [mm] (5.8")

Internal Diameter: 13.5 [mm] (0.53")

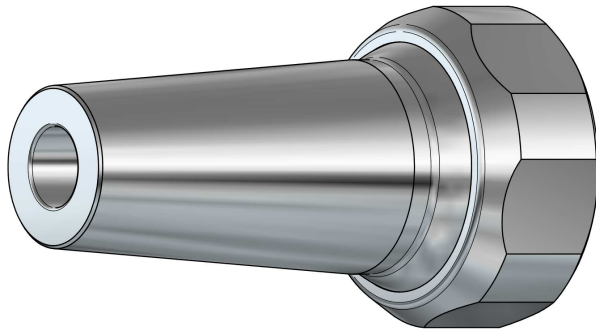
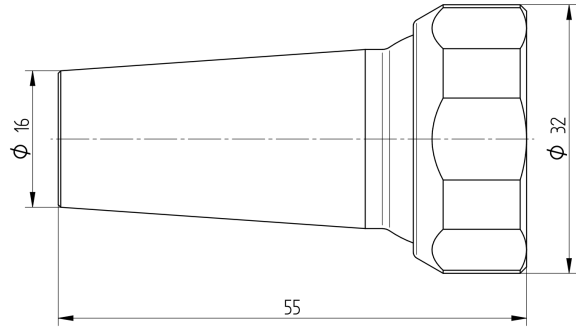
Rear Thread: G1

Tooling: SW 36

Material: Austenitic Stainless Steel / NBR (Buna-N)

Temperature Range: -30°C to 120°C (-20°F to 250°F)

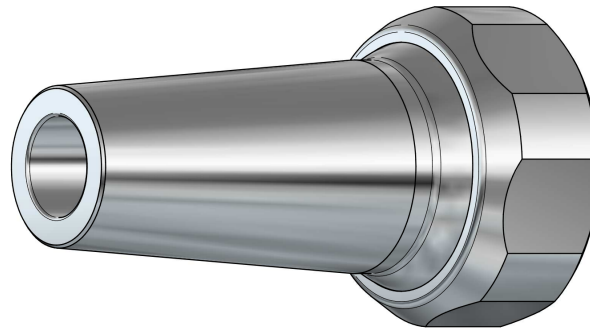
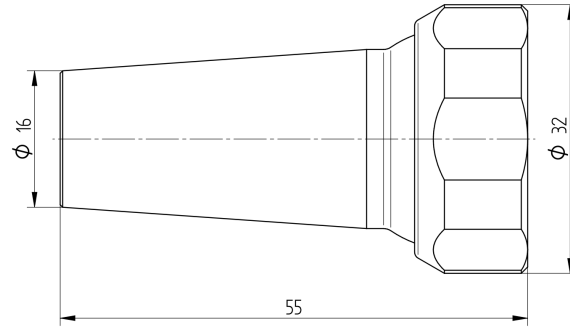
## JH12-D80



### S12 Chain Jet Basic 8 mm

SmarTec Line: S12  
External Diameter: 32 [mm] (1.26")  
Effective Length: 55 [mm] (2.16")  
Jet Diameter: 8 [mm] (0.315")  
Tooling: SW 30  
Material: Austenitic Stainless Steel / NBR (Buna-N)  
Temperature Range: -30°C to 120°C (-20°F to 250°F)

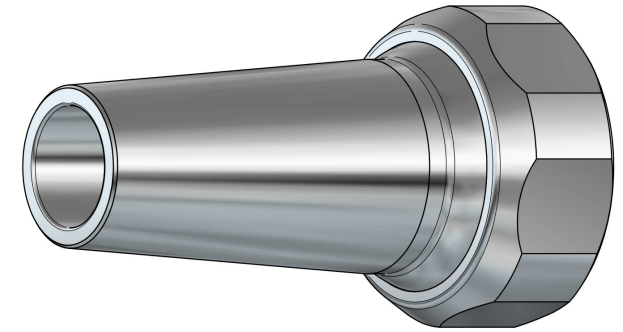
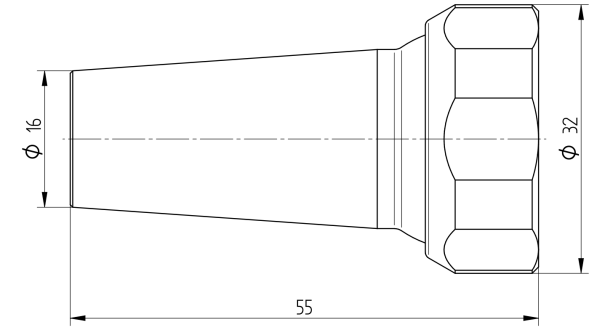
## JH12-D100



### S12 Chain Jet Basic 10 mm

SmarTec Line: S12  
External Diameter: 32 [mm] (1.26")  
Effective Length: 55 [mm] (2.16")  
Jet Diameter: 10 [mm] (0.39")  
Tooling: SW 30  
Material: Austenitic Stainless Steel / NBR (Buna-N)  
Temperature Range: -30°C to 120°C (-20°F to 250°F)

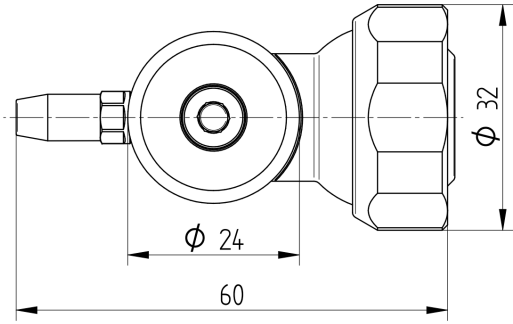
## JH12-D120



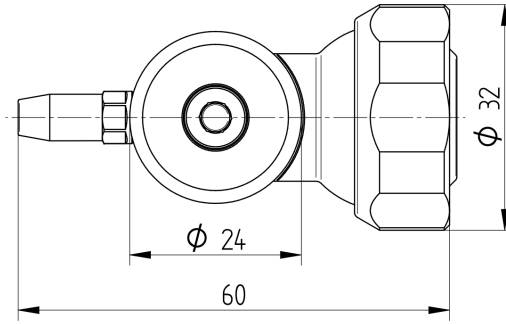
### S12 Chain Jet Basic 12 mm

SmarTec Line: S12  
External Diameter: 32 [mm] (1.26")  
Effective Length: 55 [mm] (2.16")  
Jet Diameter: 12 [mm] (0.47")  
Tooling: SW 30  
Material: Austenitic Stainless Steel / NBR (Buna-N)  
Temperature Range: -30°C to 120°C (-20°F to 250°F)

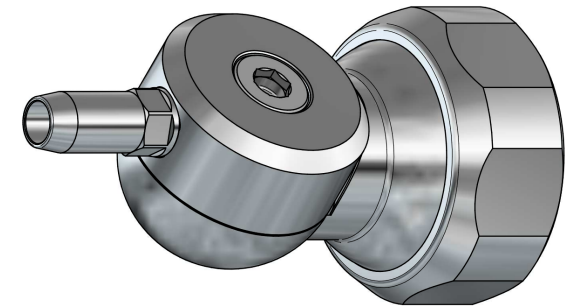
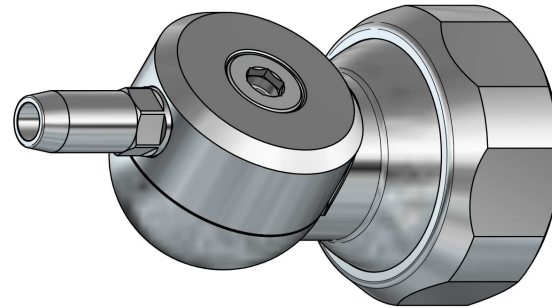
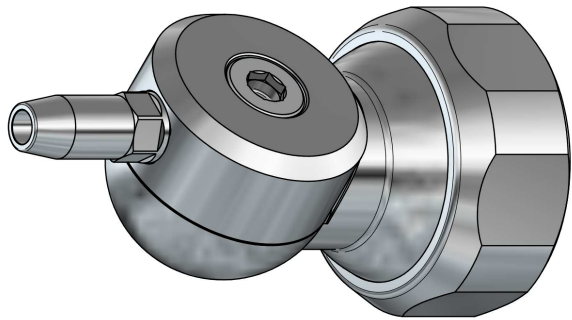
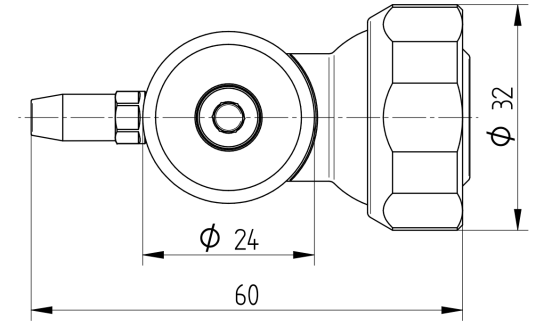
## JV12-D35



## JV12-D40



## JV12-D45



### S12 Chain Jet Variable 3.5 mm

SmarTec Line: S12  
Angle: Variable  
External Diameter: 32 [mm] (1.26")  
Effective Length: 60 [mm] (2.36")  
Jet Diameter: 3.5 [mm] (0.137")  
Tooling: SW 30  
Material: Austenitic Stainless Steel / NBR (Buna-N)  
Temperature Range: -30°C to 120°C (-20°F to 250°F)

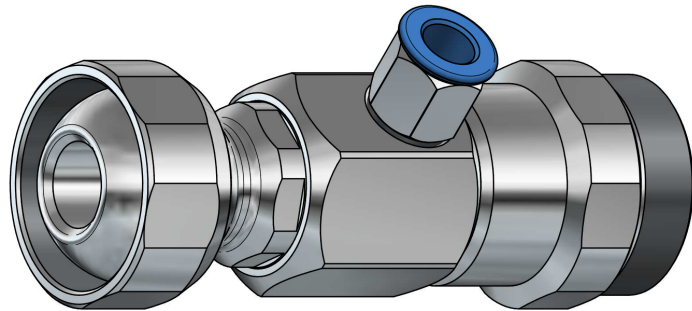
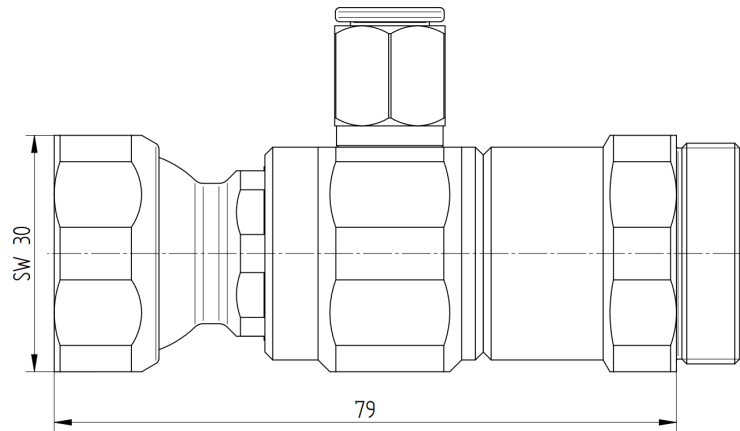
### S12 Chain Jet Variable 4 mm

SmarTec Line: S12  
Angle: Variable  
External Diameter: 32 [mm] (1.26")  
Effective Length: 60 [mm] (2.36")  
Jet Diameter: 4 [mm] (0.157")  
Tooling: SW 30  
Material: Austenitic Stainless Steel / NBR (Buna-N)  
Temperature Range: -30°C to 120°C (-20°F to 250°F)

### S12 Chain Jet Variable 4.5 mm

SmarTec Line: S12  
Angle: Variable  
External Diameter: 32 [mm] (1.26")  
Effective Length: 60 [mm] (2.36")  
Jet Diameter: 4.5 [mm] (0.177")  
Tooling: SW 30  
Material: Austenitic Stainless Steel / NBR (Buna-N)  
Temperature Range: -30°C to 120°C (-20°F to 250°F)

# CH12-MZ



## S09 Chain Unit Aeroforce™

SmarTec Line: S12

External Diameter: 32 [mm] (1.26")

Effective Length: 79 [mm] (3.11")

Internal Diameter: 12.5 [mm] (0.49")

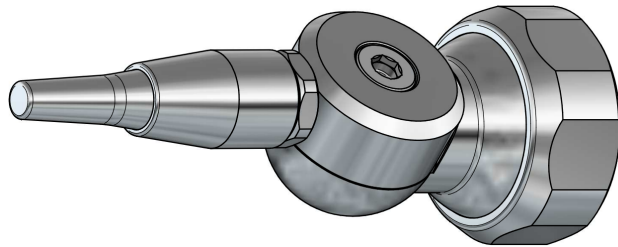
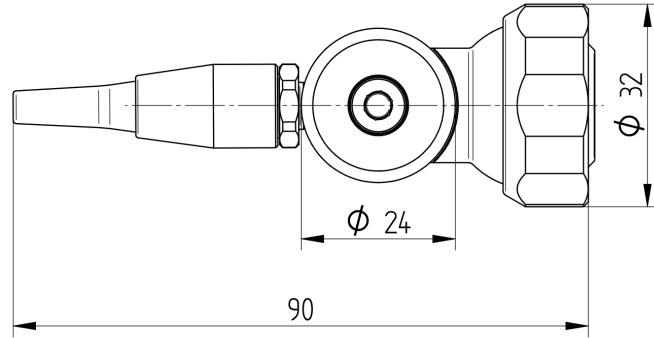
Air Tube: 8X6

Tooling: SW 30

Material: Austenitic Stainless Steel

Temperature Range: -30°C to 120°C (-20°F to 250°F)

# JV12-S06



## S12 Chain Jet Variable

SmarTec Line: S12

Angle: Variable

External Diameter: 32 [mm] (1.26")

Effective Length: 90 [mm] (3.54")

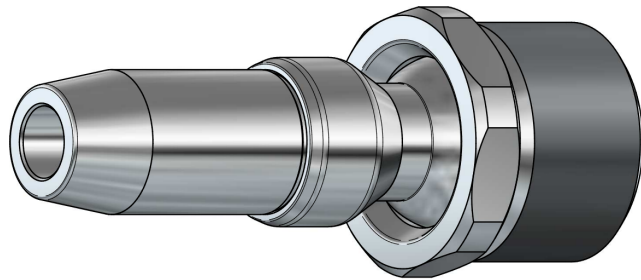
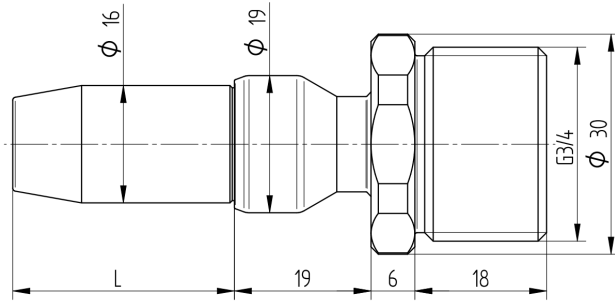
Tooling: SW 30

Material: Austenitic Stainless Steel / NBR (Buna-N)

Temperature Range: -30°C to 120°C (-20°F to 250°F)



# JB12-SML



Cat No.	L	D
JB12-S60	30	6.0
JB12-S80	30	8.0
JB12-S100	30	10.0
JB12-M60	60	6.0
JB12-M80	60	8.0
JB12-M100	60	10.0
JB12-L60	120	6.0
JB12-L80	120	8.0
JB12-L100	120	10.0

## S12 Block Jet Straight Modular

SmarTec Line: S12

External Diameter: 30 [mm] (1.2")

Effective Length: 55, 85, 145 [mm] (2.165", 3.346", 5.7")

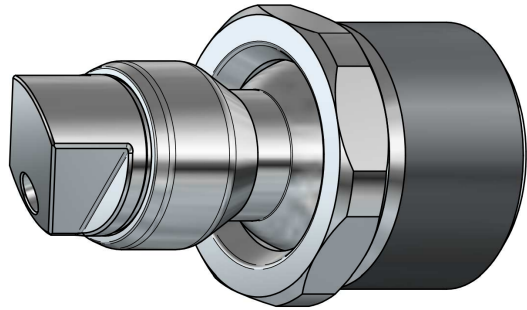
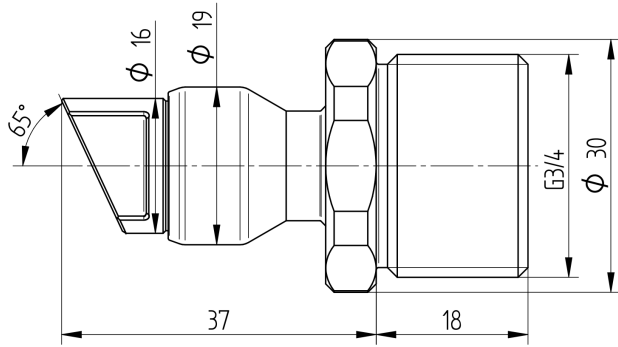
Jet Diameter: 6, 8, 10 [mm] (0.24", 0.3", 0.4")

Tooling: SW 28

Material: Austenitic Stainless Steel / NBR (Buna-N)

Temperature Range: -30°C to 120°C (-20°F to 250°F)

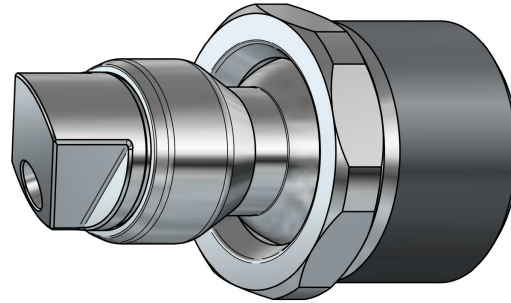
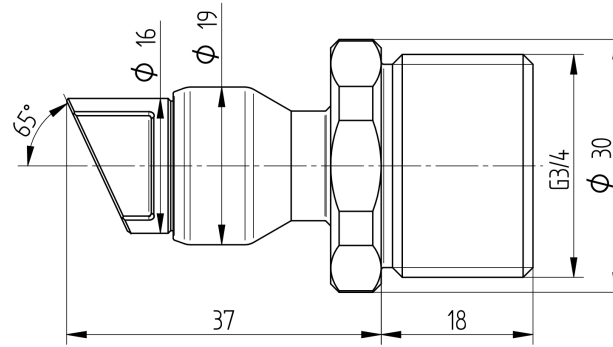
## JB12-V40



### S12 Block Jet 0° to 50° 4 mm

SmarTec Line: S12  
External Diameter: 30 [mm] (1.2")  
Effective Length: 37 [mm] (1.456")  
Jet Diameter: 4 [mm] (0.16")  
Max Horizontal Angle: 50°  
Min Horizontal Angle: 0°  
Tooling: SW 28  
Thread: G3/4  
Material: Austenitic Stainless Steel / NBR (Buna-N)  
Temperature Range: -30°C to 120°C (-20°F to 250°F)

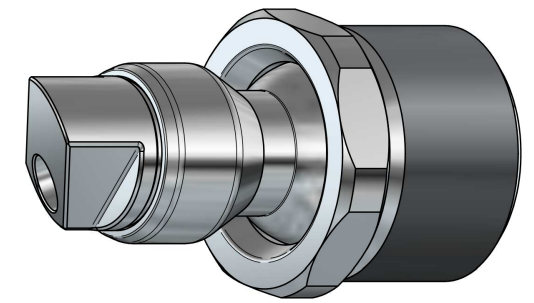
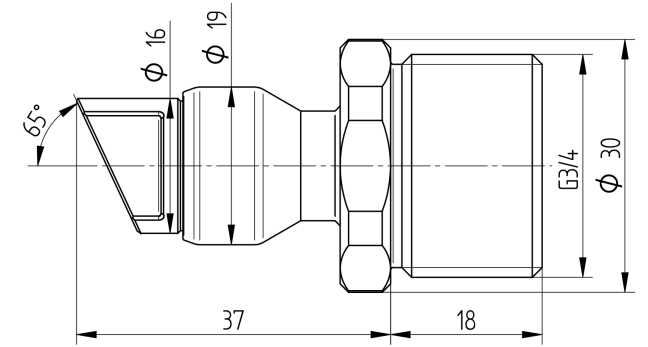
## JB12-V50



### S12 Block Jet 0° to 50° 5 mm

SmarTec Line: S12  
External Diameter: 30 [mm] (1.2")  
Effective Length: 37 [mm] (1.456")  
Jet Diameter: 5 [mm] (0.2")  
Max Horizontal Angle: 50°  
Min Horizontal Angle: 0°  
Tooling: SW 28  
Thread: G3/4  
Material: Austenitic Stainless Steel / NBR (Buna-N)  
Temperature Range: -30°C to 120°C (-20°F to 250°F)

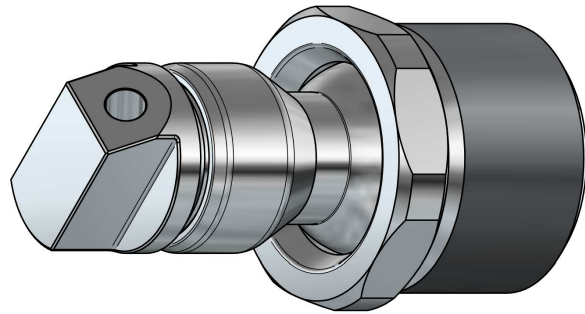
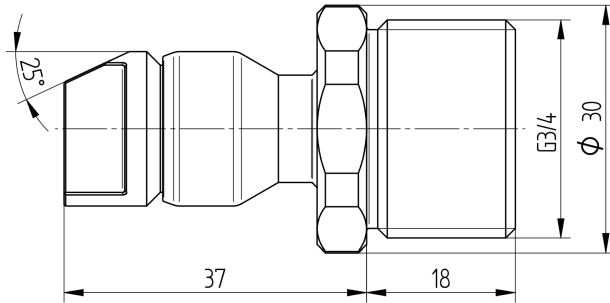
## JB12-V60



### S12 Block Jet 0° to 50° 6 mm

SmarTec Line: S12  
External Diameter: 30 [mm] (1.2")  
Effective Length: 37 [mm] (1.456")  
Jet Diameter: 6 [mm] (0.24")  
Max Horizontal Angle: 50°  
Min Horizontal Angle: 0°  
Tooling: SW 28  
Thread: G3/4  
Material: Austenitic Stainless Steel / NBR (Buna-N)  
Temperature Range: -30°C to 120°C (-20°F to 250°F)

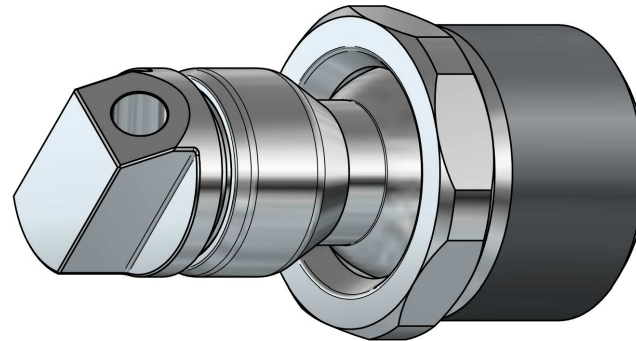
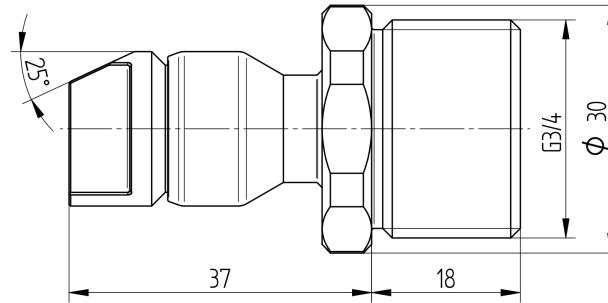
## JB12-W40



### S12 Block Jet 40° to 90° 4 mm

SmarTec Line: S12  
External Diameter: 30 [mm] (1.2")  
Effective Length: 37 [mm] (1.456")  
Jet Diameter: 4 [mm] (0.16")  
Max Horizontal Angle: 90°  
Min Horizontal Angle: 40°  
Tooling: SW 28  
Thread: G3/4  
Material: Austenitic Stainless Steel / NBR (Buna-N)  
Temperature Range: -30°C to 120°C (-20°F to 250°F)

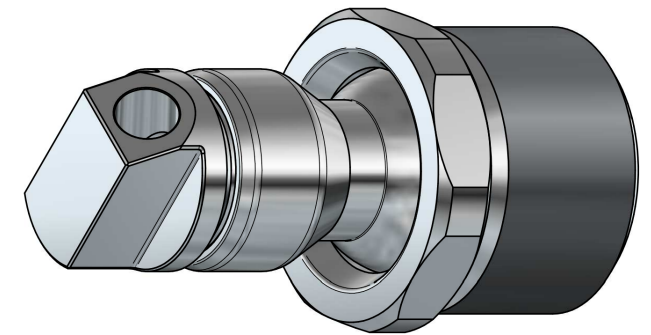
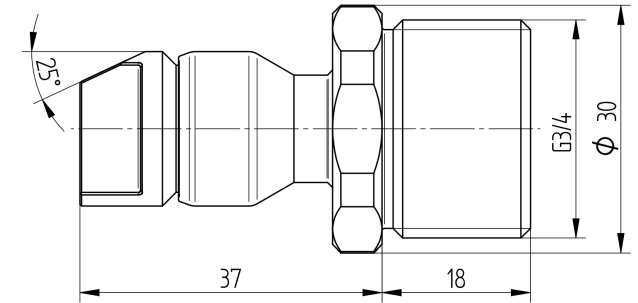
## JB12-W50



### S12 Block Jet 40° to 90° 5 mm

SmarTec Line: S12  
External Diameter: 30 [mm] (1.2")  
Effective Length: 37 [mm] (1.456")  
Jet Diameter: 5 [mm] (0.2")  
Max Horizontal Angle: 90°  
Min Horizontal Angle: 40°  
Tooling: SW 28  
Thread: G3/4  
Material: Austenitic Stainless Steel / NBR (Buna-N)  
Temperature Range: -30°C to 120°C (-20°F to 250°F)

## JB12-W60

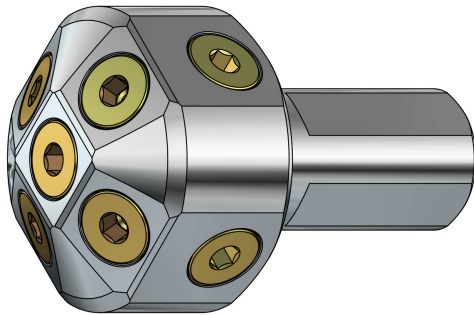
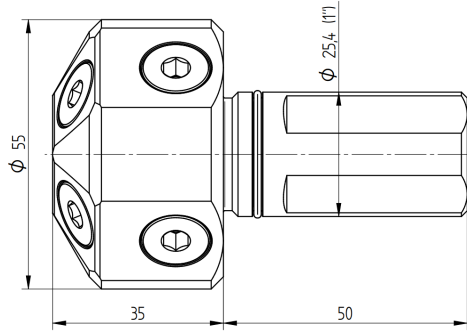


### S12 Block Jet 40° to 90° 6 mm

SmarTec Line: S12  
External Diameter: 30 [mm] (1.2")  
Effective Length: 37 [mm] (1.456")  
Jet Diameter: 6 [mm] (0.24")  
Max Horizontal Angle: 90°  
Min Horizontal Angle: 40°  
Tooling: SW 28  
Thread: G3/4  
Material: Austenitic Stainless Steel / NBR (Buna-N)  
Temperature Range: -30°C to 120°C (-20°F to 250°F)

# JR12

## JR12-IN



## S12 Machine Cleaning Jet Imperial

SmarTec Line: S12

External Diameter: 55 [mm] (2.165")

Clamping Diameter: 25.4 [mm] (1")

Clamping Length: 50 [mm] (1.97")

Effective Length: 35 [mm] (1.378")

Internal Diameter: 13.5 [mm] (0.53")

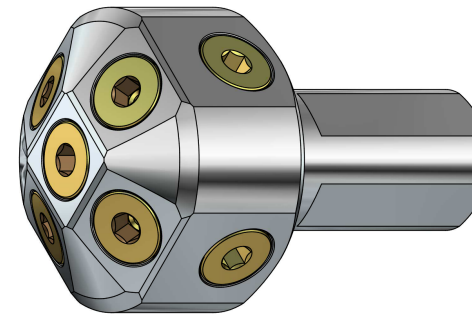
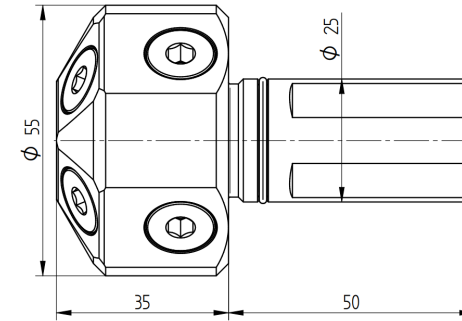
Flats: 23

Thread: G3/8

Material: Austenitic Stainless Steel / NBR / Brass

Temperature Range: -30°C to 120°C (-20°F to 250°F)

## JR12-ME



## S12 Machine Cleaning Jet Metric

SmarTec Line: S12

External Diameter: 55 [mm] (2.165")

Clamping Diameter: 25 [mm] (0.98")

Clamping Length: 50 [mm] (1.97")

Effective Length: 35 [mm] (1.378")

Internal Diameter: 13.5 [mm] (0.53")

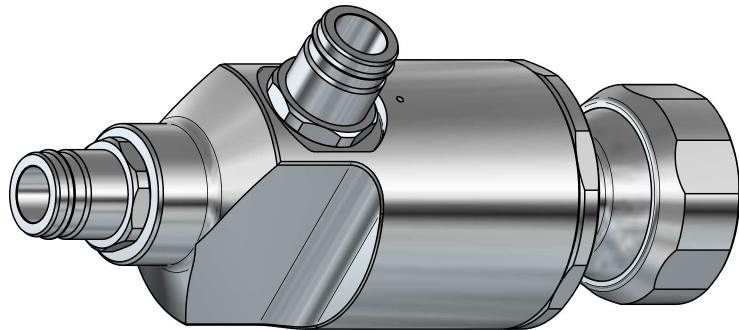
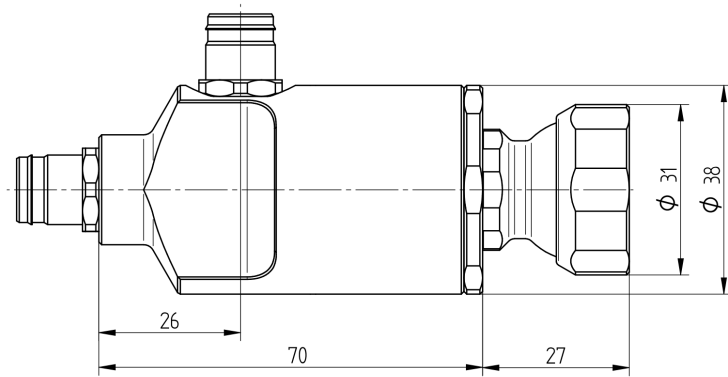
Flats: 23

Thread: G3/8

Material: Austenitic Stainless Steel / NBR / Brass

Temperature Range: -30°C to 120°C (-20°F to 250°F)

# VL00



## Mechanical Valve

SmarTec Line: S12

External Diameter: 38 [mm] (1.5")

Effective Length: 85 [mm] (3.346")

Internal Diameter: 13.5 [mm] (0.53")

Air Fittings connection: G1/4

Tooling: SW 30

Material: Austenitic Stainless Steel / NBR (Buna-N)

Temperature Range: -30°C to 120°C (-20°F to 250°F)

<b>KIT S12</b>			
<b>No.</b>	<b>Product Code</b>	<b>Product Description</b>	<b>Quantity</b>
1	AM12-R375	Machine adaptor R3/8	1
2	AM12-R500	Machine adaptor R1/2	1
3	AM12-R750	Machine adaptor R3/4	1
4	CH12-AS	Chain unit straight S	6
5	CH12-FS	Chain unit 45* S	1
6	CH12-PS	Chain unit 90* S	1
7	CH12-MZ	Aeroforce™ 12	1
8	JH12-D80	Chain jet basic 8 mm	1
9	JH12-D100	Chain jet basic 10 mm	1
10	JH12-D120	Chain jet basic 12 mm	1
11	VL00	Mechanical valve	1
12	EX-PCV08	Pneumatic check valve for A tube 08	1
13	EX-PAR08	Pneumatic air regulator for A tube 08	1
14	EQ12-FK80	S12 Flat keys short	1

Lines 1, 2 and 3 may be ordered with:

<b>No.</b>	<b>Product Code</b>	<b>Product Description</b>	<b>Quantity</b>
1	AM12-G375	Machine adaptor G3/8	1
2	AM12-G500	Machine adaptor G1/2	1
3	AM12-G750	Machine adaptor G3/4	1